

PROGETTO: **ABITARE MEDITERRANEO**
 PROGETTO FINANZIATO DALLA REGIONE TOSCANA
 FONDI POR FESR 2007 - 2013
CASO STUDIO:
PROTOTIPO SPERIMENTALE
DI SOLUZIONI TECNOLOGICHE

COMMITTENTE: ASSOCIAZIONE TEMPORANEA DI SCOPO
 N° 12980 S1-T - FIRENZE - 4 NOV. 2009
 REP. 72269, 72304, 72318, 72331, 72332, 72333 FASC. 11910

PROGETTISTA: ARCH. ALESSANDRO PANICHI

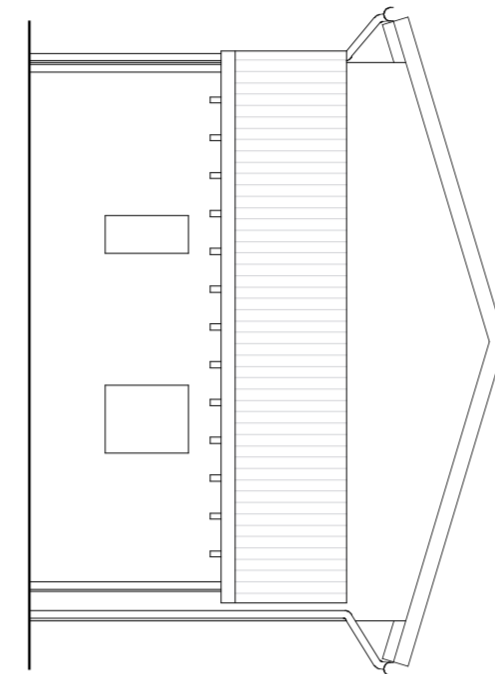
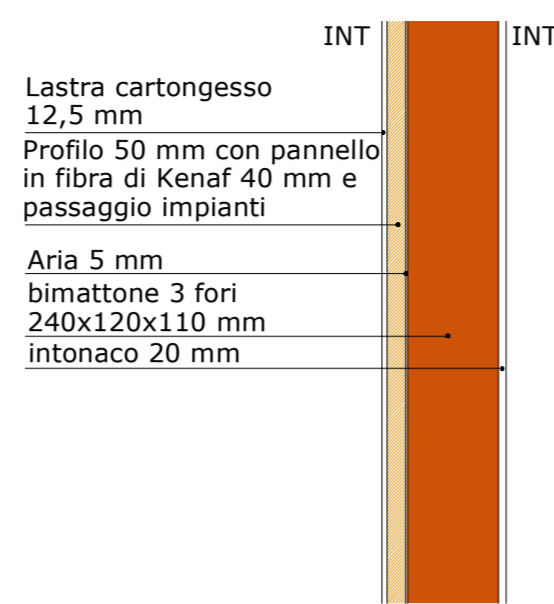
COLLABORATORI: ARCH. ALESSANDRO MELILLO
 ING. MATTEO CHESI

TAVOLA: PIANTE, PROSPETTI, SEZIONI
 STATO DI PROGETTO SCALA 1:100
 STRATIGRAFIE DI COPERTURA
 E PARETI ESTERNE SCALA 1:20
 MODELLO TRIDIMENSIONALE

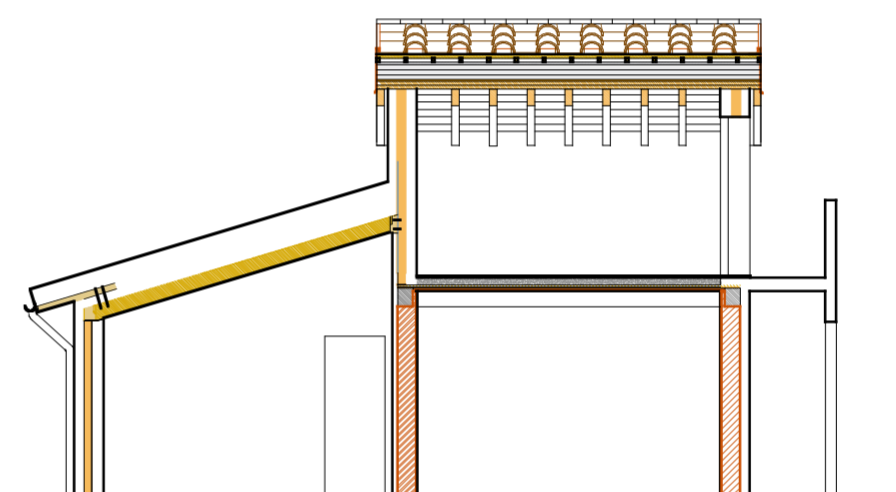
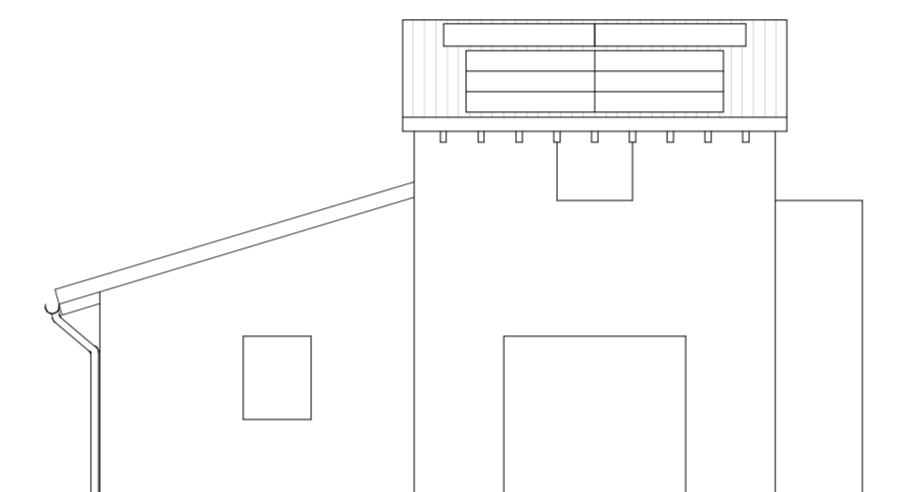
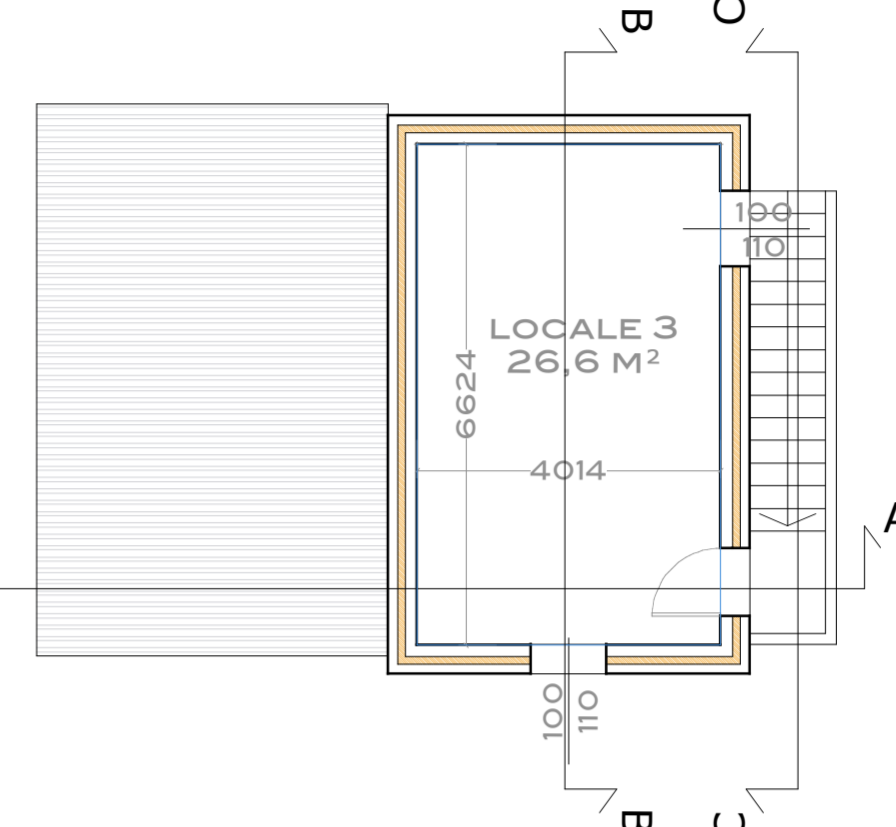
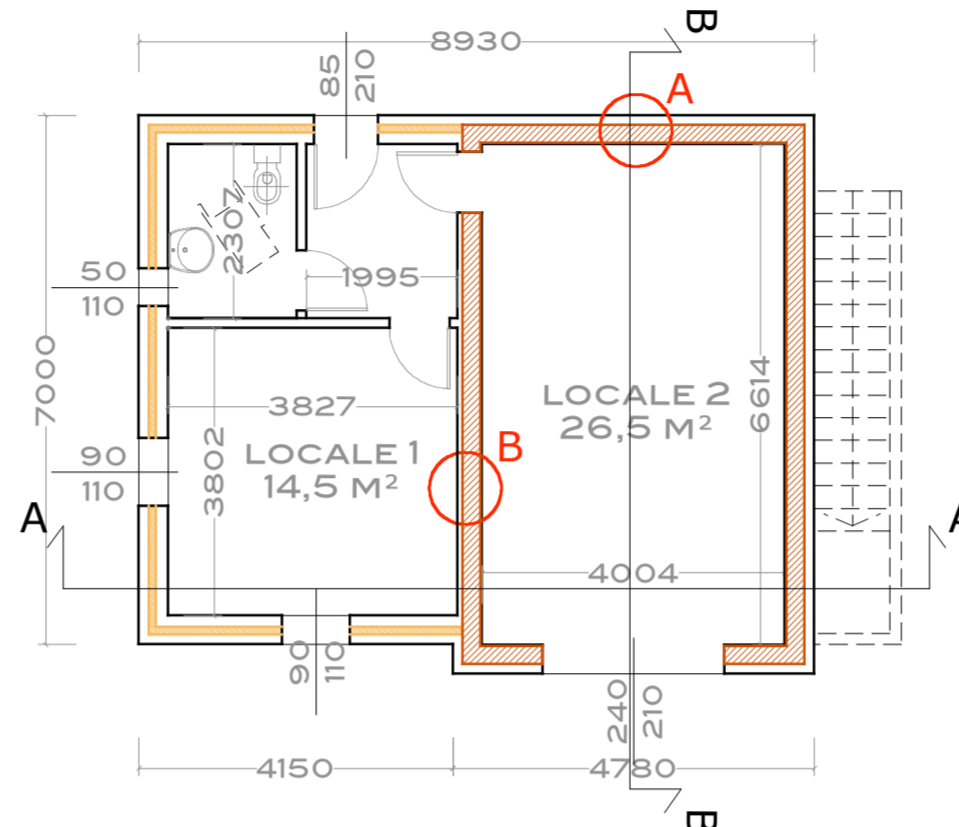
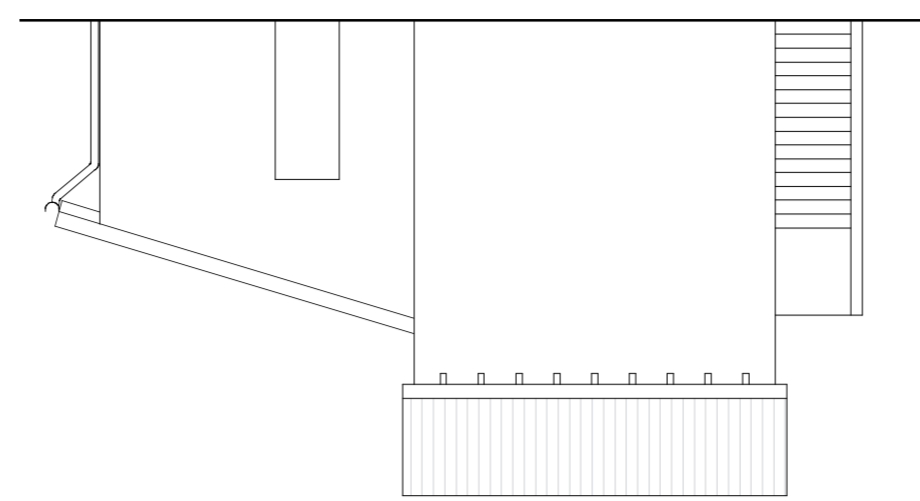
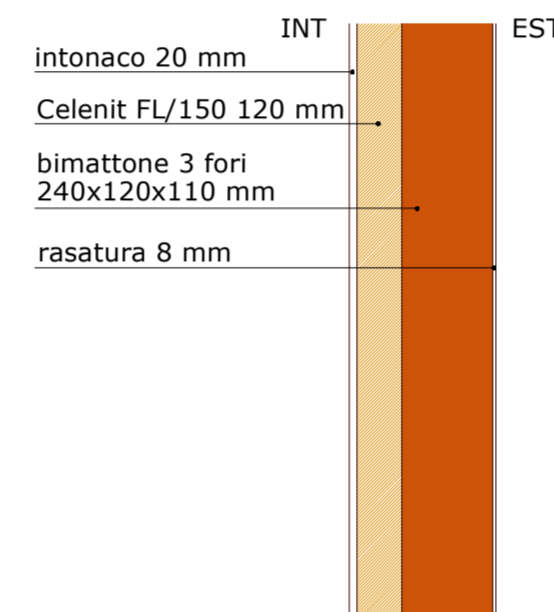
DATA: SAN VINCENZO, 05.04.2011



Parete B



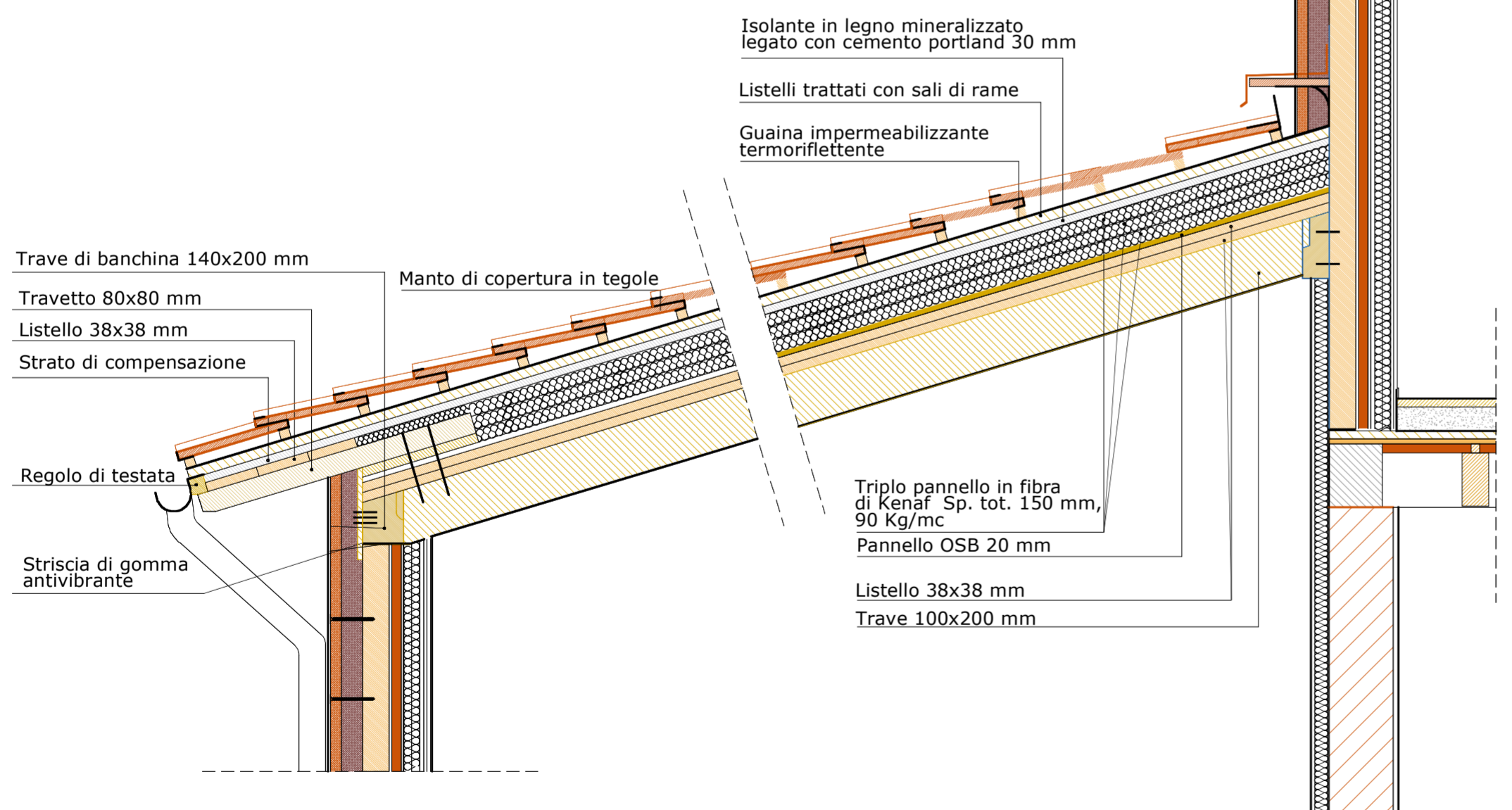
Parete A



Sezione A-A

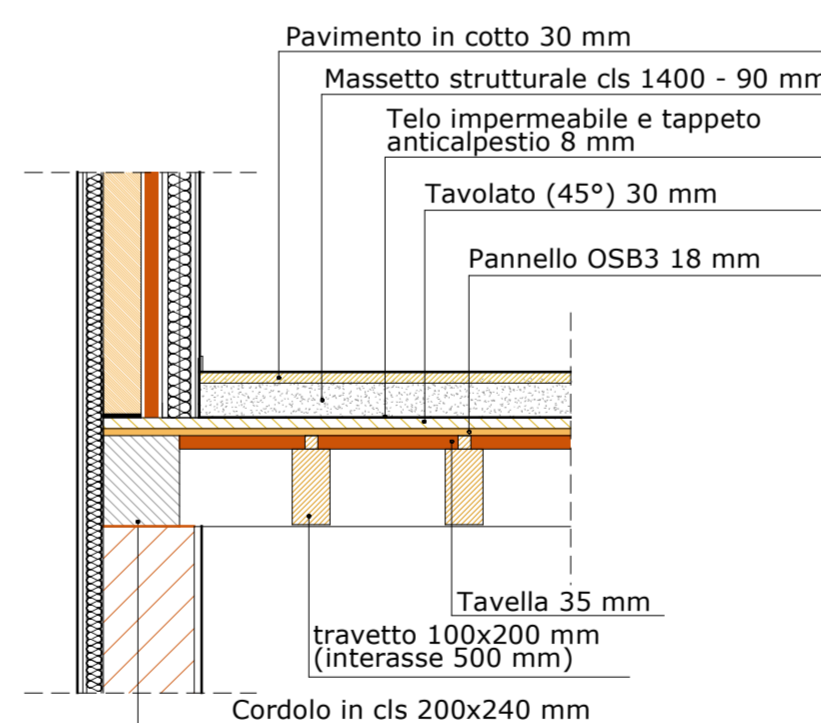
STRATIGRAFIA COPERTURA

SCALA 1:20



PARTICOLARE DEL NODO SOLAIO-PARETE

SCALA 1:20



STRATIGRAFIA DELLA PARETE ECO, DEL SOLAIO E DELLA FONDAZIONE

SCALA 1:20

