

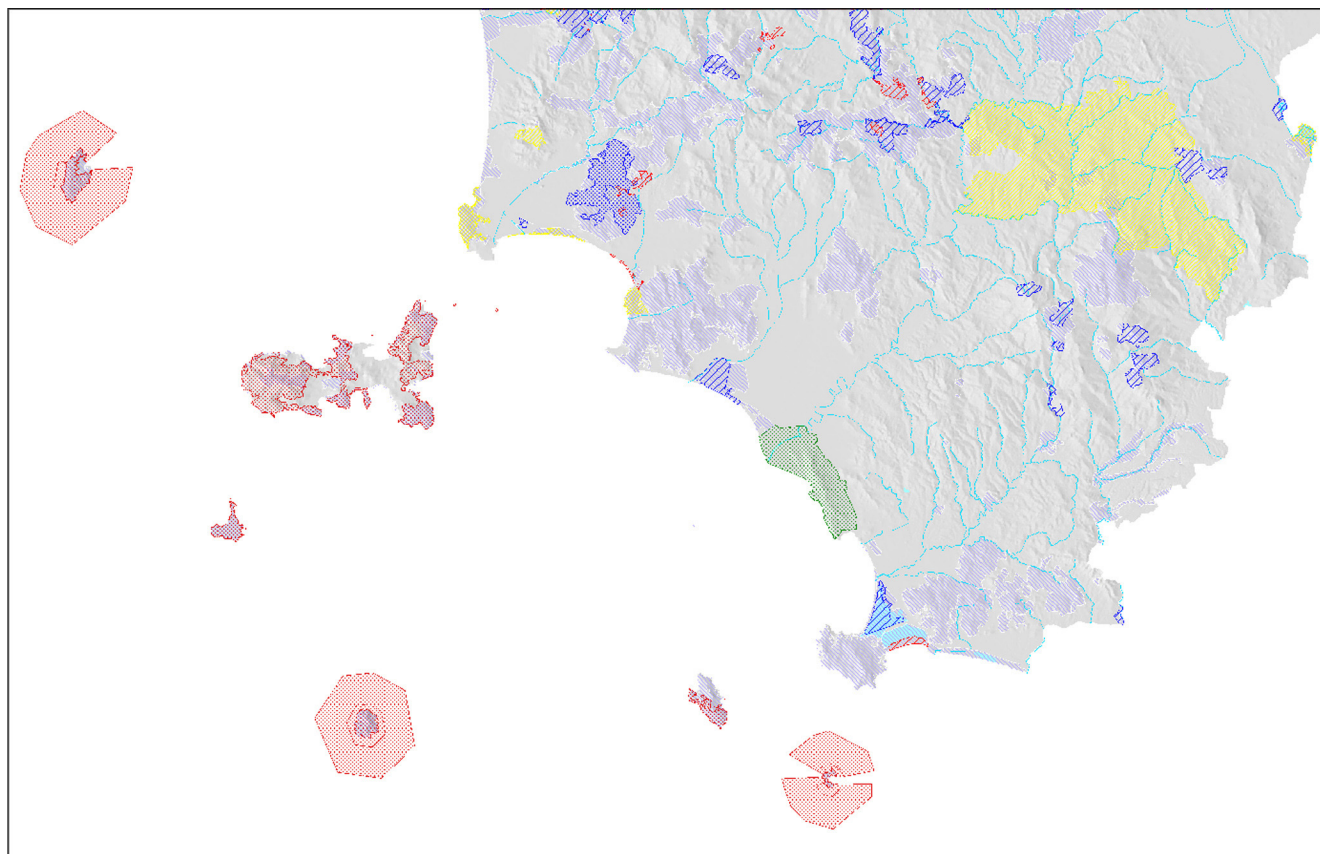











# Regione Toscana - Giunta Regionale

## Piano di Indirizzo Territoriale

Quadro dei vincoli e degli ambiti di interesse naturale (Tavola 2)

*Tavola illustrativa*



-  Parchi nazionali
-  Riserve naturali nazionali
-  Parchi regionali
-  Parchi provinciali
-  Riserve naturali provinciali
-  Aree naturali protette di interesse locale (ANPIL)
-  Aree di riferimento per l'avvio dei procedimenti istitutivi (ex aree b,c,d, D.C.R. 296/88)
-  Fiumi principali
-  Laghi, lagune